

LEADING THE WAY IN  
**FAÇADE**  
**CONSTRUCTION**





## COMPANY OVERVIEW

**PMB FAÇADE TECHNOLOGY SDN BHD** ("PMBF" or "the Company") was incorporated as a private limited company under the Companies Act 1965 in Malaysia on March 5, 1994. It is a wholly-owned subsidiary of PMB Technology Bhd, a public company listed on the Main Market of Bursa Malaysia Securities Berhad. The principal activities of the Company include the design, fabrication, and installation of aluminium curtain walls, cladding systems, and related products.

The Company is dedicated to providing clients with the latest in curtain wall and cladding designs for their building projects. As a reliable and reputable contractor, PMBF offers a single-source responsibility for aluminium curtain wall and cladding sub-contracts, encompassing design and engineering, extrusions, finishing, procurement, fabrication, assembly, glazing, site installation, and project management.

**MENARA YTL**  
KUALA LUMPUR,  
MALAYSIA  
KPF ARCHITECTS

## LOCATION



### **MALAYSIA**

– PMB FAÇADE TECHNOLOGY SDN BHD



### **SINGAPORE**

– PMB FAÇADE TECHNOLOGY (S) PTE. LTD



### **BANGLADESH**

– KAI PMB FAÇADE TECHNOLOGY LTD



### **MACAU**

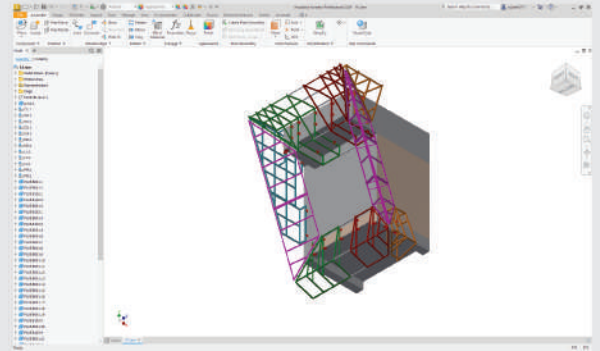
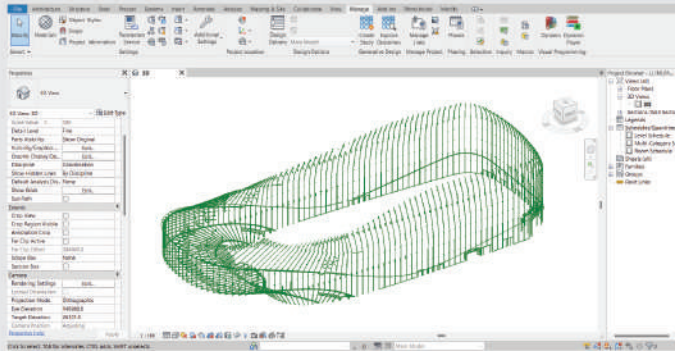
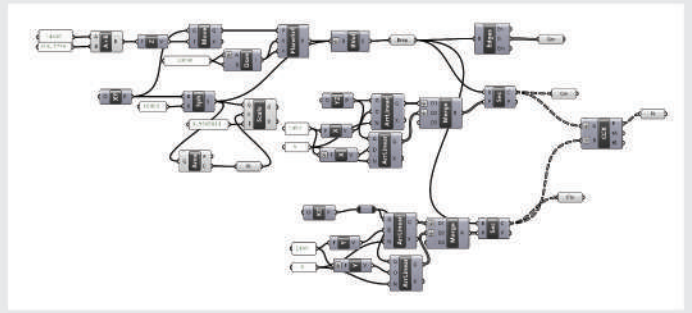
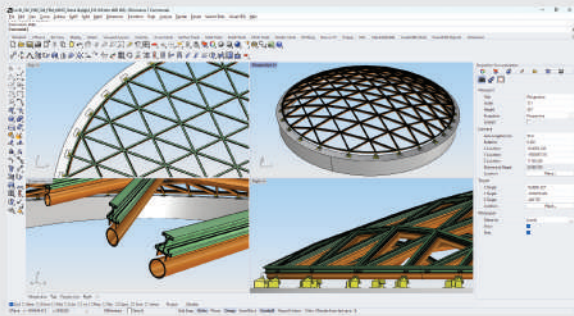
– PMB CYBERWALL



### **HONG KONG**

– PMB CYBERWALL

## DESIGN & ENGINEERING



Application:



AutoCAD



Inventor



Revit



grasshopper

SketchUp

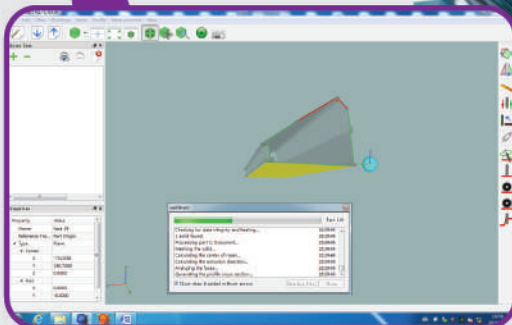


## FABRICATION, ASSEMBLY & GLAZING

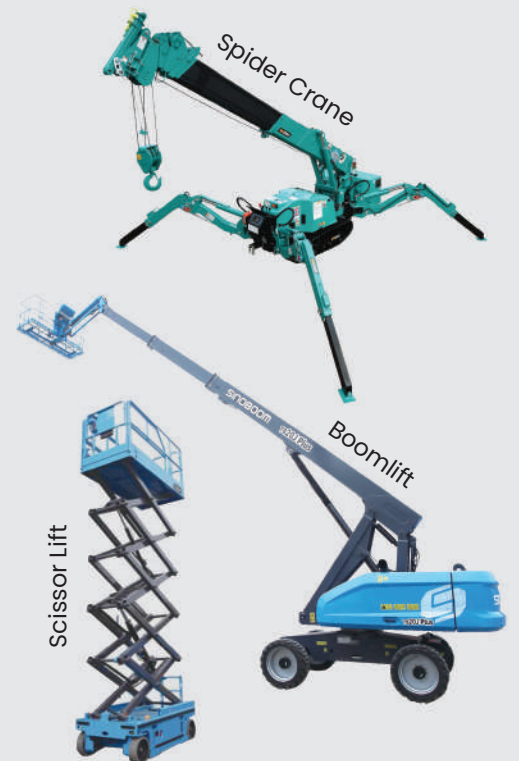
5-Axis CNC Machine



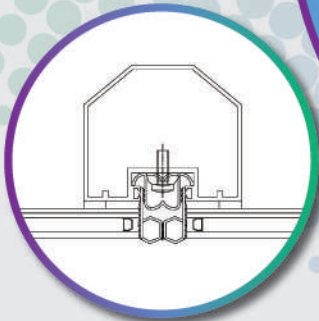
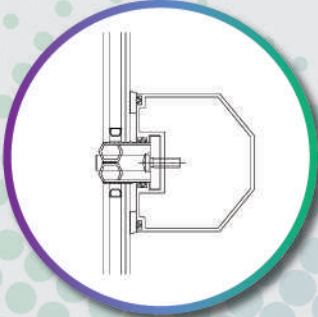
Glass Glazing



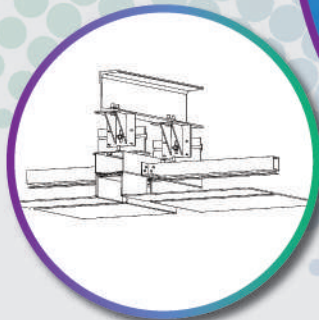
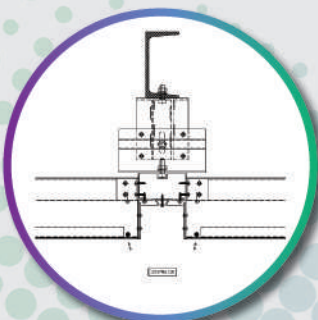
## MACHINERY FOR INSTALLATION



**AL-BIDDA TOWER**  
DOHA, QATAR  
GHD GLOBAL ARCHITECTS



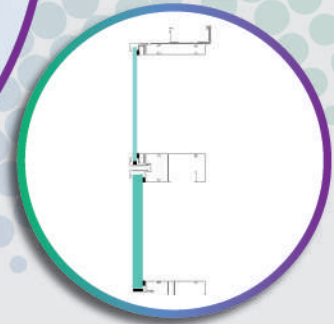
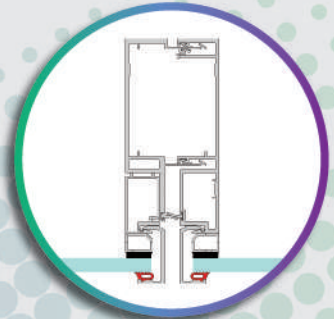
**MARINA BAY SANDS**  
BAYFRONT AVENUE, SINGAPORE  
SAFDIE ARCHITECTS



## ILHAM TOWER

KUALA LUMPUR, MALAYSIA

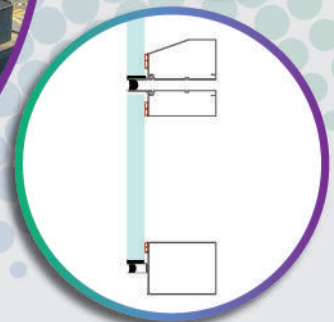
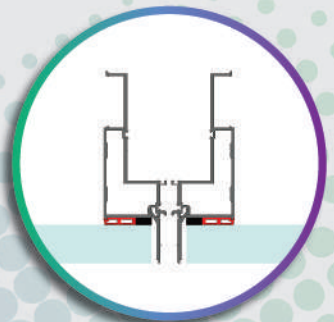
FOSTER + PARTNERS ARCHITECTS



## KLCC LOT M PODIUM *(Under construction)*

KUALA LUMPUR, MALAYSIA

KPF ARCHITECTS





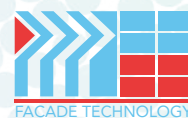
**HIKMAH EXCHANGE**  
KUCHING, MALAYSIA  
PU ARCHITECTS



**PICC PUTRAJAYA**  
PUTRAJAYA, MALAYSIA  
HIJJAS ARCHITECTS + PLANNERS

**PMB Façade Technology Sdn Bhd**  
Registration No. 199401005807 (291486-H)

Lot 1797, Jalan KPB 1, Bukit Belimbing,  
43300 Seri Kembangan, Selangor Darul Ehsan, Malaysia.  
Tel : +603-8961 8355 / 5205 Fax : +603-8961 8357  
Email : pmbfacade@pmbfacade.com /  
overseasenquiry@pmbfacade.com



<https://pmbtechnology.com/PMBTFacade.html>